

A photograph of a wedding bouquet in a glass vase and a pair of white high-heeled shoes on a wooden surface. The bouquet is in the upper left, and the shoes are in the center. The background is a window with a white frame.

*Hand*PICKED
HOTELS

YOUR WEDDING

BRANDSHATCH PLACE
HOTEL & SPA
FAWKHAM, KENT



CREATING MAGICAL MEMORIES

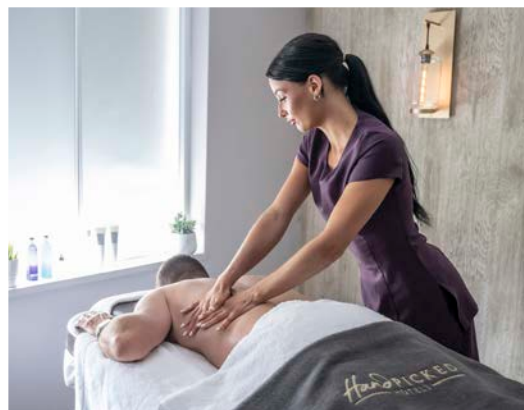
An idyllic rural retreat with gorgeous grounds, coupled with over 20 years of experience hosting one-of-a-kind weddings, is why many happy couples choose to celebrate their special day with us at Brandshatch Place.



Whether you are planning a classic wedding or something a little different, we will help tailor a unique wedding day that celebrates you.

EXTEND YOUR EXPERIENCE

Whether you arrive the night before or on the big day, Brandshatch Place is yours to enjoy, complementing each and every moment.



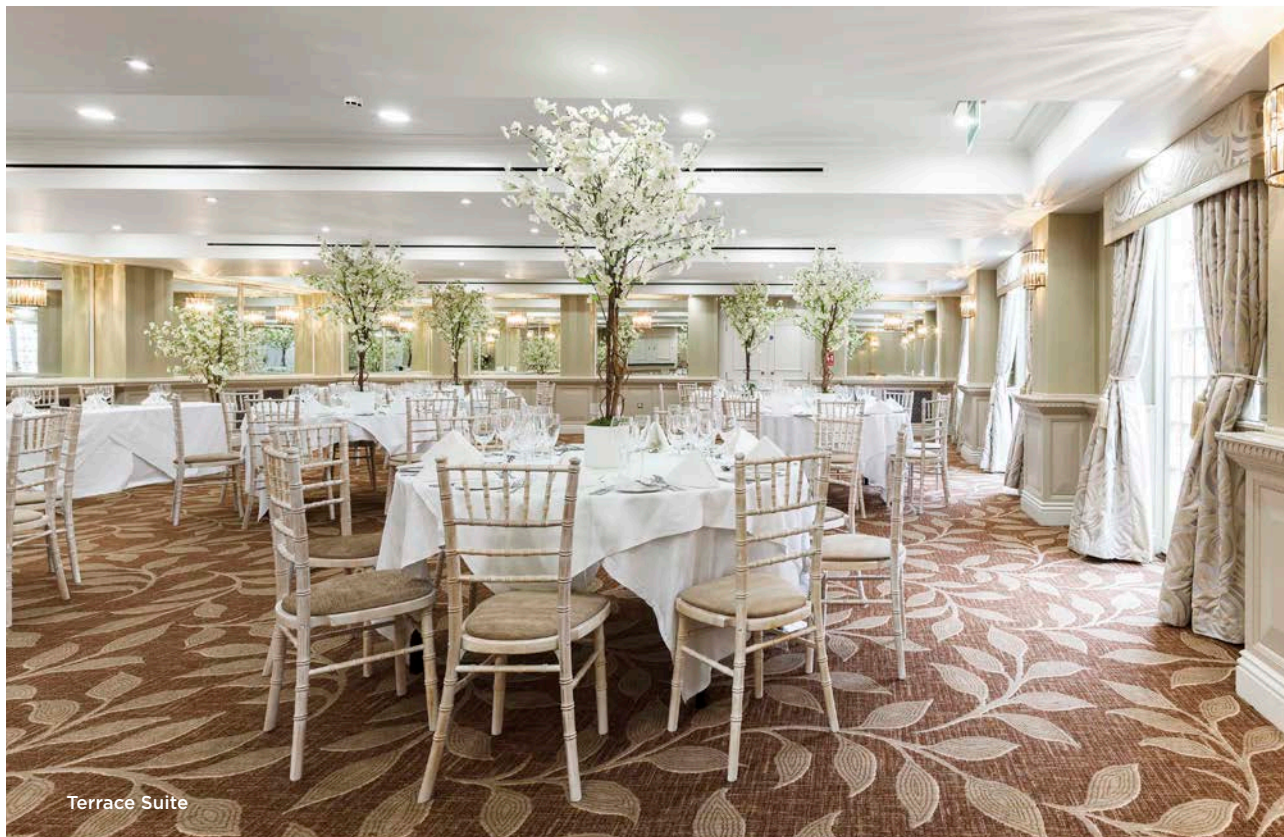
Your wedding is more than just a day! In the run up to the main event, enjoy a sparkling afternoon tea, unwind by the pool or reserve a stunning private dining room to host a welcome dinner.

Our suites and bedrooms are a joy to get ready in and capture those exciting 'morning of the wedding' photographs.



YOUR CEREMONY

Striking, elegant and full of character, each setting offers an idyllic backdrop for your ceremony or celebration.



Terrace Suite

Terrace Suite

This is our largest ceremony room with mirrors that add a spacious, contemporary feel. Double doors run along one whole side of room, providing access onto the courtyard whilst filling the room with lots of light. It even has a private bar, foyer and entrance – the perfect all-round venue for your day.

Civil ceremonies – up to 110 guests

Wedding meal – up to 110 guests

Evening reception – up to 150 guests



Oak Room

Say your vows in this contemporary and elegant space. The painted oak-panelled walls are accentuated by vintage gold frames and plush curtains. Views over the grounds are a wonderful addition to your ceremony venue.

Civil ceremony - up to 80 guests

Wedding meal - up to 40 guests

Boardroom

Complete with an original fireplace, the Boardroom is a beautiful place for a more intimate ceremony. The large bay window offers plenty of natural daylight and views of the grounds. Plus, its neutral décor keeps this room feeling light and airy.

Civil ceremony - up to 40 guests

Wedding meal - up to 30 guests

GROUNDS AND GARDENS

A worthy setting in themselves, use our picturesque grounds for drinks, entertainment or stunning photo opportunities.



Brandshatch Place is perched on a hilltop overlooking a rolling landscape of Kent countryside. Our gardens are bursting with picture perfect spots, whatever the season.



Use our grounds for shimmering reception drinks, spirited lawn games, or to slip away for a moment of calm.

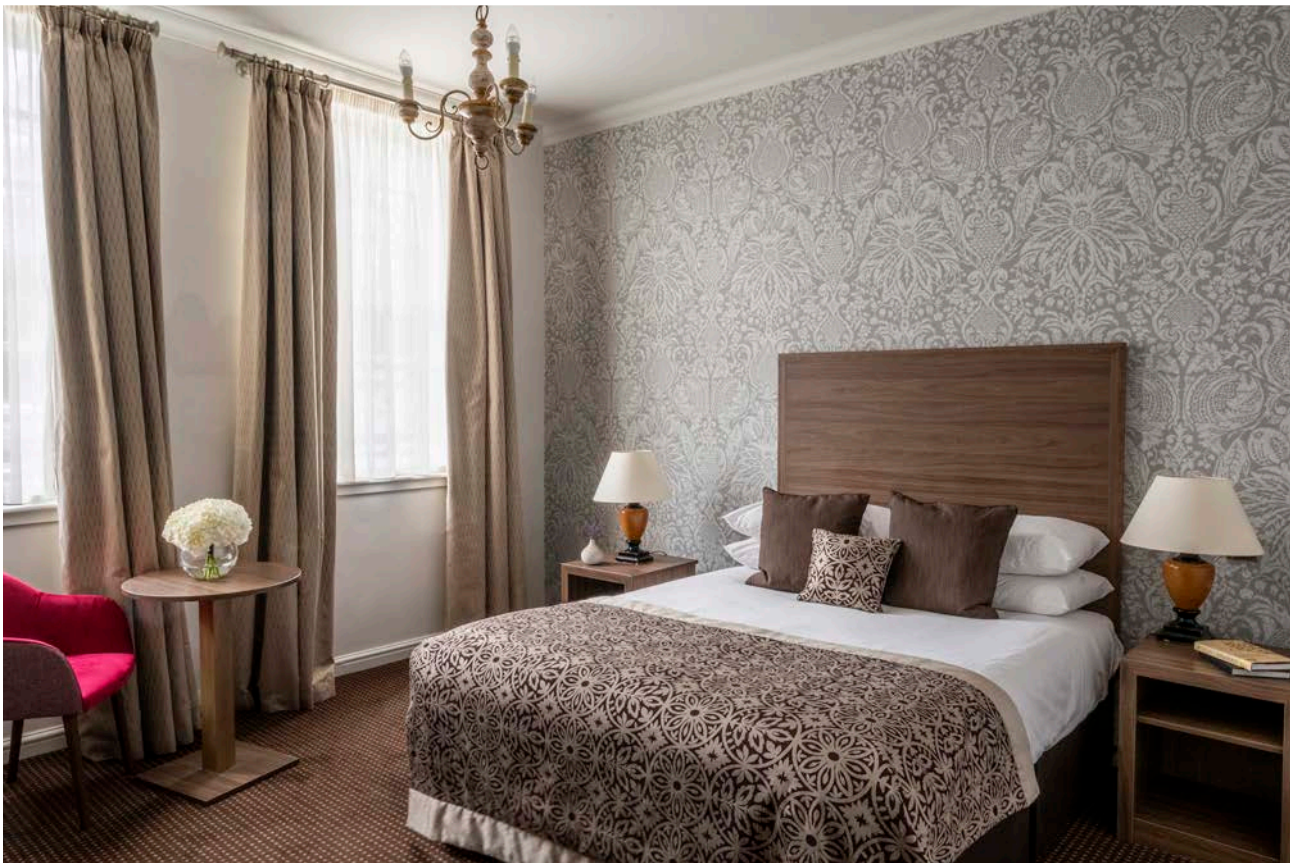


THE FOOD AND DRINK YOU LOVE

Delight in every mouthful. Our kitchen team is passionate about seasonal food and showcasing the region's best produce.



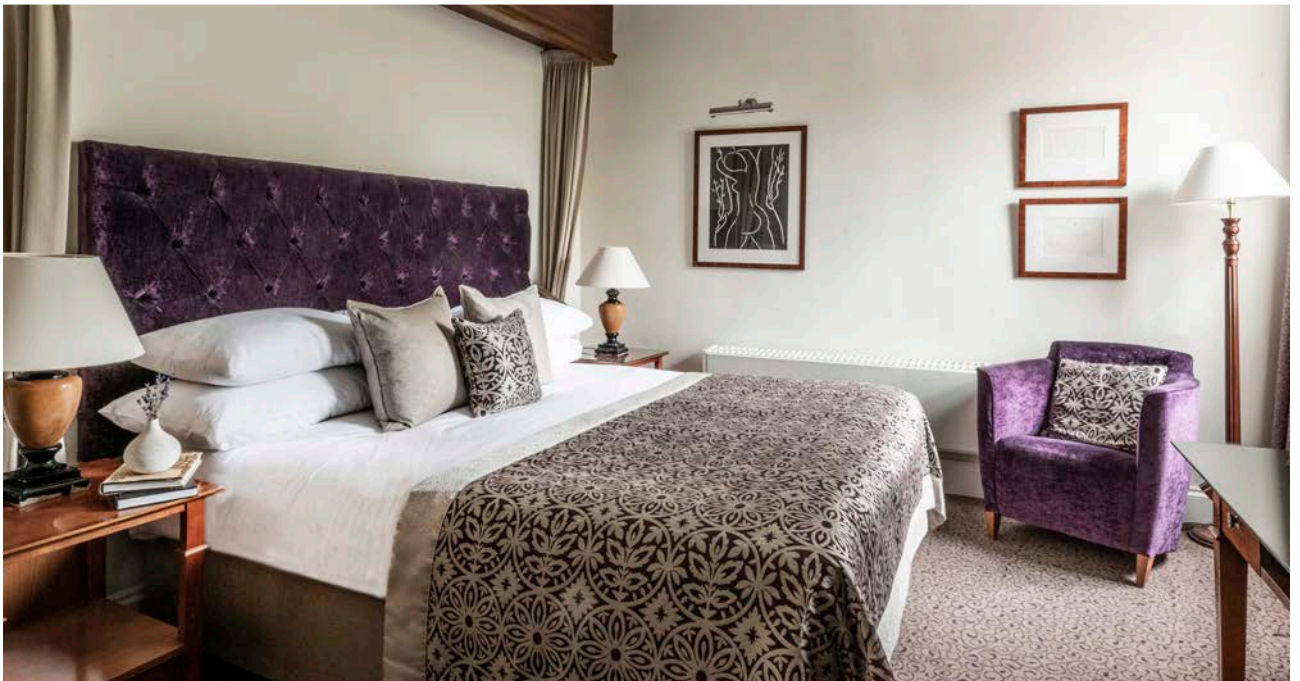
Let us design a specially crafted cocktail or themed bar that is unique to you, and as night falls, wow your guests with anything from sharing platters to interactive food stations.



STAY THE NIGHT

Brandshatch Place has 38 elegant bedrooms, including two luxurious suites.

To make your guests feel at home, we are delighted to offer preferential wedding accommodation rates for all of your guests, including those suitable for families, with a full traditional breakfast, and use of the hotel's leisure facilities, included.







EXCLUSIVELY YOURS

Make our house your home and celebrate with only your nearest and dearest for company. For a unique experience with the highest degree of privacy and unrivalled flexibility, choose exclusive use of Brandshatch Place.



Brandshatch Place Hotel & Spa

Brands Hatch Road, Fawkham, Kent DA3 8NQ

01474 875000

brandshatchplace@handpicked.co.uk

Central Reservations

01642 706606

handpickedhotels.co.uk/brandshatchplace

Photographic contribution from

Adam Lowndes Photography

Jeff Oliver Photography

Martin Bell Photography

Noteworthy Photography

Photography by Kirsty

Ross Hurley Photography

Sim Photography

Please note that some imagery within this brochure may have been taken at other Hand Picked Hotels venues and may not represent the specific facilities available at Brandshatch Place.

*Hand*PICKED
HOTELS