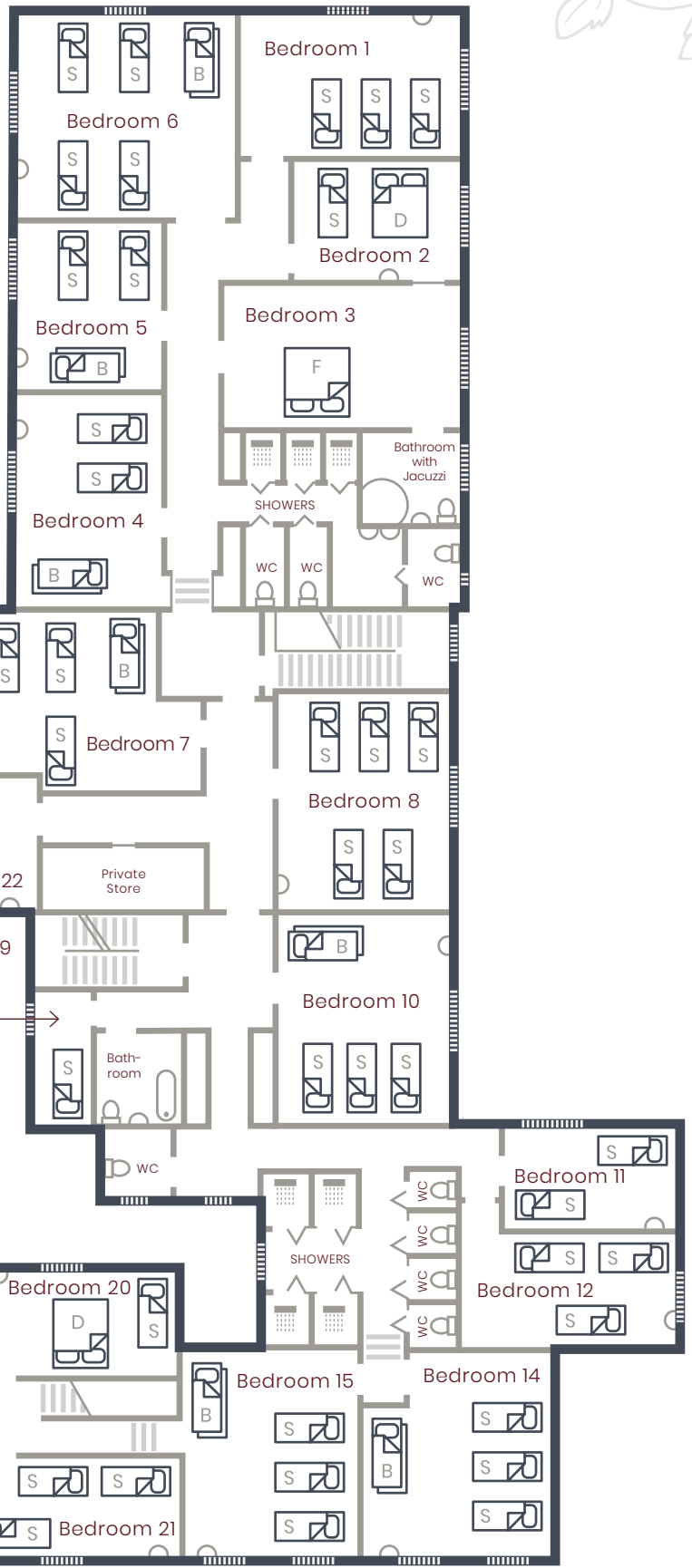


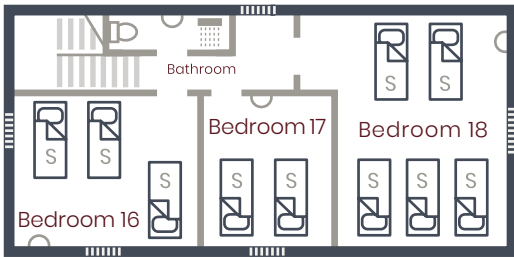


Colehayes Park

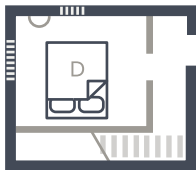
FIRST FLOOR



SECOND FLOOR



GROUND FLOOR

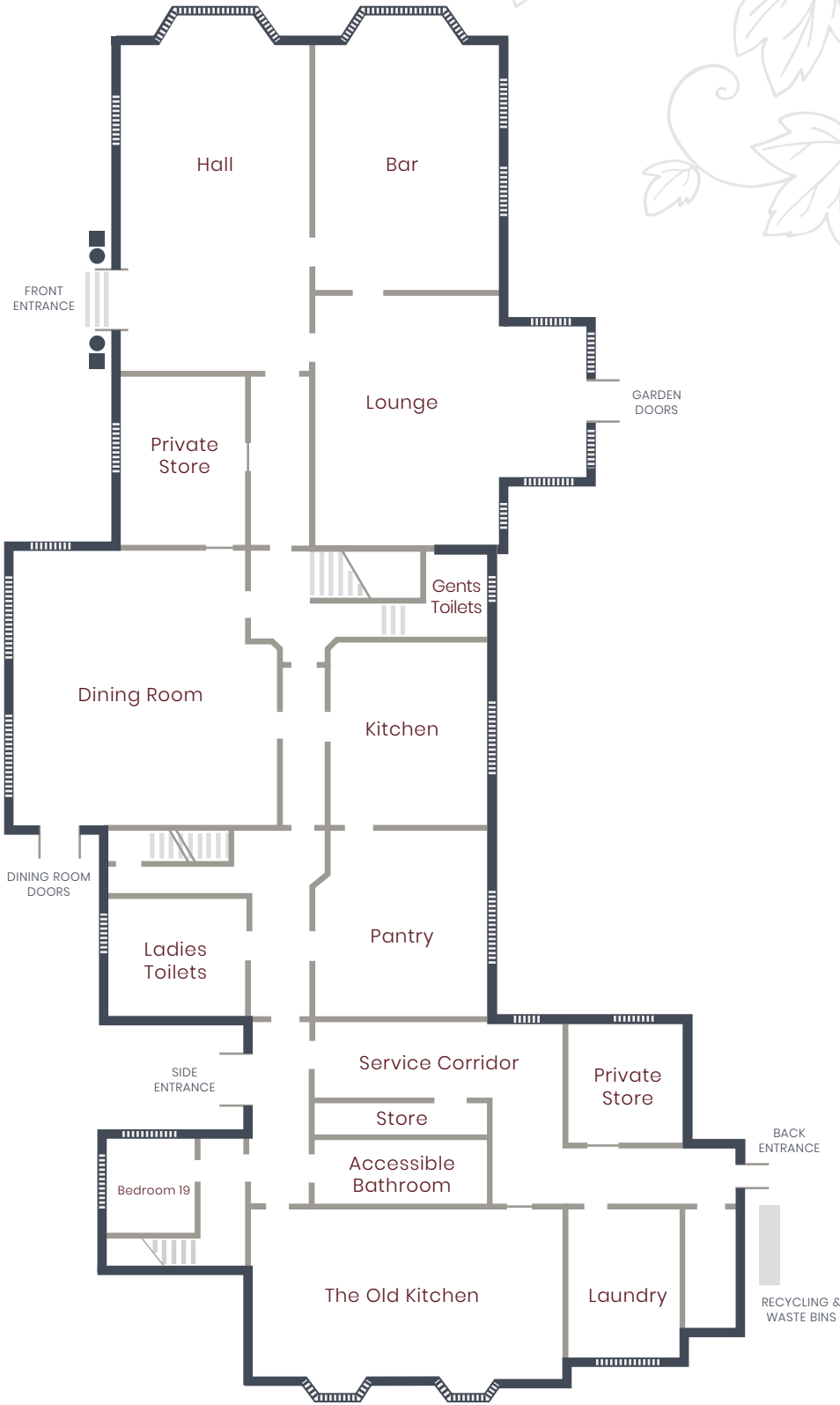


- S - Single Bed
- D - Double Bed
- B - Bunk Bed
- F - Four Poster Bed

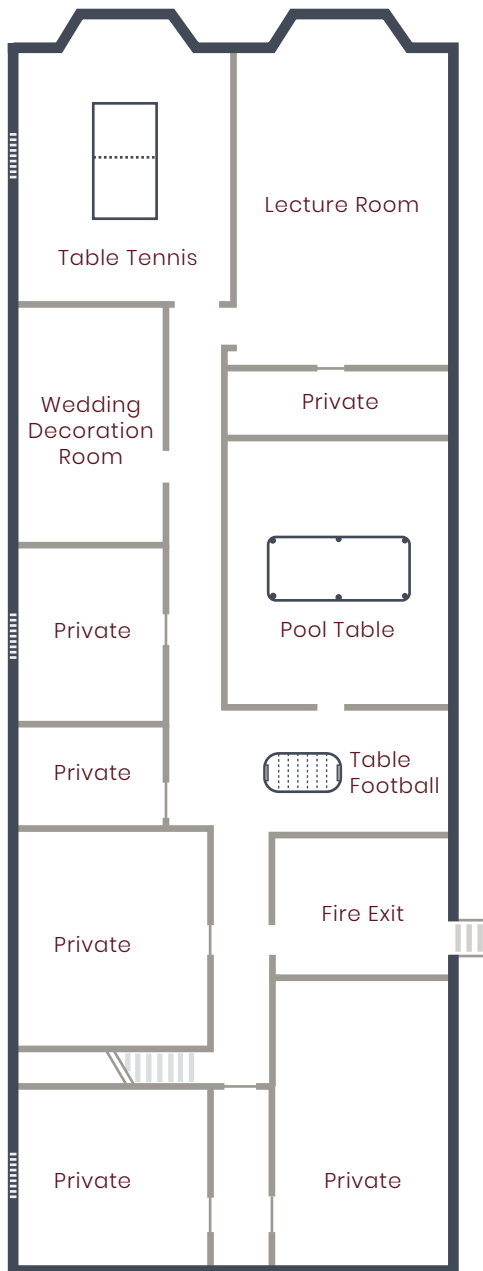


Colehayes Park

GROUND FLOOR



BASEMENT



The Colehayes Bedrooms



Bedroom 1



Bedroom 2



Bedroom 3



Bedroom 4



Bedroom 5



Bedroom 6



Bedroom 7



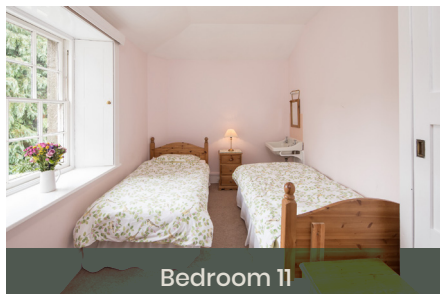
Bedroom 8



Bedroom 9



Bedroom 10



Bedroom 11



Bedroom 12



Bedroom 14



Bedroom 15



Bedroom 16



The Colehayses Bedrooms



Bedroom 17



Bedroom 18



Bedroom 19



Bedroom 20



Bedroom 21



Bedroom 22





Capacities

For a Ceremony

Oak Panelled Hall – 90 seated comfortably or 150 if mostly standing.
Lounge Room – best for intimate weddings under 50 due to furniture.
Three Outside Licensed Areas – over 200 seated.

For Dining

Dining Room – 80 seated
Oak Panelled Hall – 60 seated
Bar – 30 seated

Dimensions

Dining Room – 7.5 x 7.7m
Front Hall – 10.8 x 5.1m
Bar – 7 x 5.1m
Lounge Room – 7 x 7.8m
Basement Lecture Room – 8.5 x 5.1m

Dimensions taken include bay window recesses

Room	People	Description
1	3	3 Singles*
2	3	1 Double, 1 Single
3	2	Four Poster Double
4	4	2 Singles, 1 Bunk*
5	4	2 Singles, 1 Bunk
6	6	4 Singles, 1 Bunk
7	7	5 Singles, 1 Bunk*
8	5	5 Singles*
9	1	1 Single
10	5	3 Singles, 1 Bunk*
11	2	2 Singles
12	3	3 Singles
13	0	Non-existent – as unlucky!
14	5	3 Singles, 1 Bunk*
15	5	3 Singles, 1 Bunk*
16	3	3 Singles
17	2	2 Singles
18	5	5 Singles*
19	2	1 Double
20	3	1 Double, 1 Single
21	3	3 Singles
22	2	1 Double

* Rooms can be made up to have a 'Super King' bed, by pushing two singles together.